

The OLFA logo is displayed in a bold, black, sans-serif font with a white outline, set against a black rectangular background. A registered trademark symbol (®) is located to the right of the logo.

# Designer's Knife

A sharp-pointed blade and a pen-like handle for ultimate precise cutting.  
Enhanced design knife, with its multirole spare blade case, takes usability a step further.



**SPARE BLADE CASE**  
includes a needle, and  
together with the blade cover,  
works as a **STANDISH**.



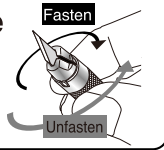
Top end of the handle is a  
come in handy **SPATULA**.



# Designer's Knife Cut as you write with a pen.

## Easy Quick-Spin Blade Change

High-power pipe sleeve fixes a blade firmly for ultimate precise cutting. Easy to set a blade/needle with Anti-Slip Function.



## SPATULA

smoothes adhesive materials.



SPARE BLADES

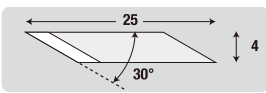
Includes **30** spare blades

Nonskid Design

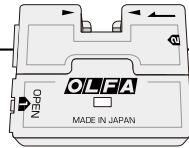
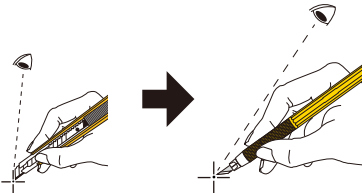
## SAFETY BLADE COVER

is square-shaped to avoid its rolling away, and works as a standish while connected to the spare blade case. There is a blade snapper for DKB blade users at the top of the cap.

## KB-5

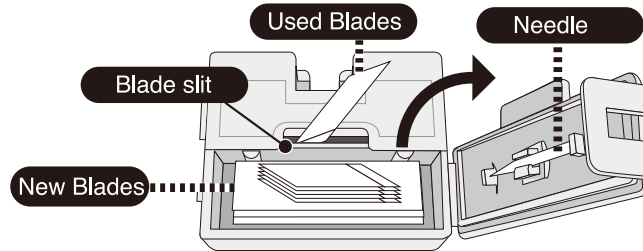


Sharp-Pointed Edge is easy to see where the blade edge is while cutting. Try and see.

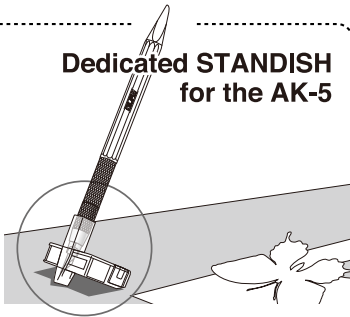


## 2-Room SPARE BLADE CASE

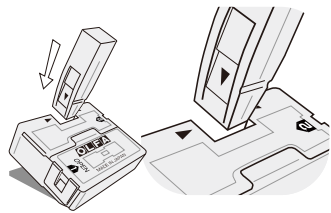
The blade container serves as a blade disposal case as well. The slit to discard used blades and the room for keeping them until disposing in bulk only open while the new-blade room is open. For a safety purpose, the lid of disposal case is designed to be difficult to open intentionally.



## Dedicated STANDISH for the AK-5

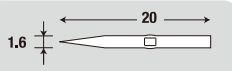


Just piece the blade cap and blade container together.



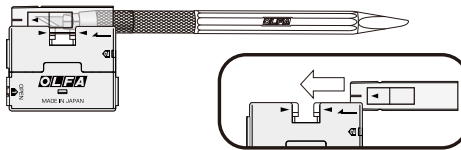
## Useful Needle

A needle is found and kept in the room for new blades, behind the lid. The accessories needle is designed for peeling labels, marking on plastic modeling, and scribing.

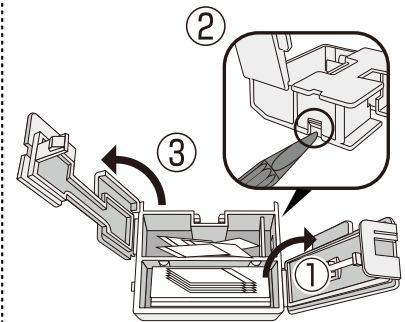


## Off-Work Safety

Slide in the blade cover to the side of spare blade case not to lose a part.



## Easy to separate refuse:



Double Locks: The room for keeping used blades can be opened only while the new-blade room is opening.

MODEL	PACKAGE	BARCODE	INNER BOX	CARTON
<b>AK-5</b>	<b>Blister Packed</b> CARD SIZE: 65x220mm	0 91511 22001 8	100 91511 22001 5	500 91511 22001 3
		6 pcs.	120 pcs.	

## WARNING

1. Blade extremely sharp. Handle with care.
2. Wear safety goggles and gloves.
3. Keep out of the reach of children.

URL <http://www.olfa.com>

MANUFACTURED BY OLFA CORPORATION, OSAKA 537-0021, JAPAN

**OLFA**  
THE ORIGINATOR SINCE 1956

PRINTED IN JAPAN